



EN

IST-3402.PT13.02/A

File: IST-3402.PT13.02_A_ENG_AC999.doc

Extinguisher pressure test Brixia Pressure Test AC999



User instruction

CPF Industriale S.p.a

Via Enrico Fermi,98 25064 Gussago (Brescia) – Italy - Tel: +39 030 31 04 61 - Fax: +39 030 31 04 65

http: www.cpfindustriale.it

e-mail: info@cpfindustriale.it

IMPORTANT NOTE

Please read and keep this user 's instructions.

NOTE: This manual applies to devices with firmware version 2.0 and later

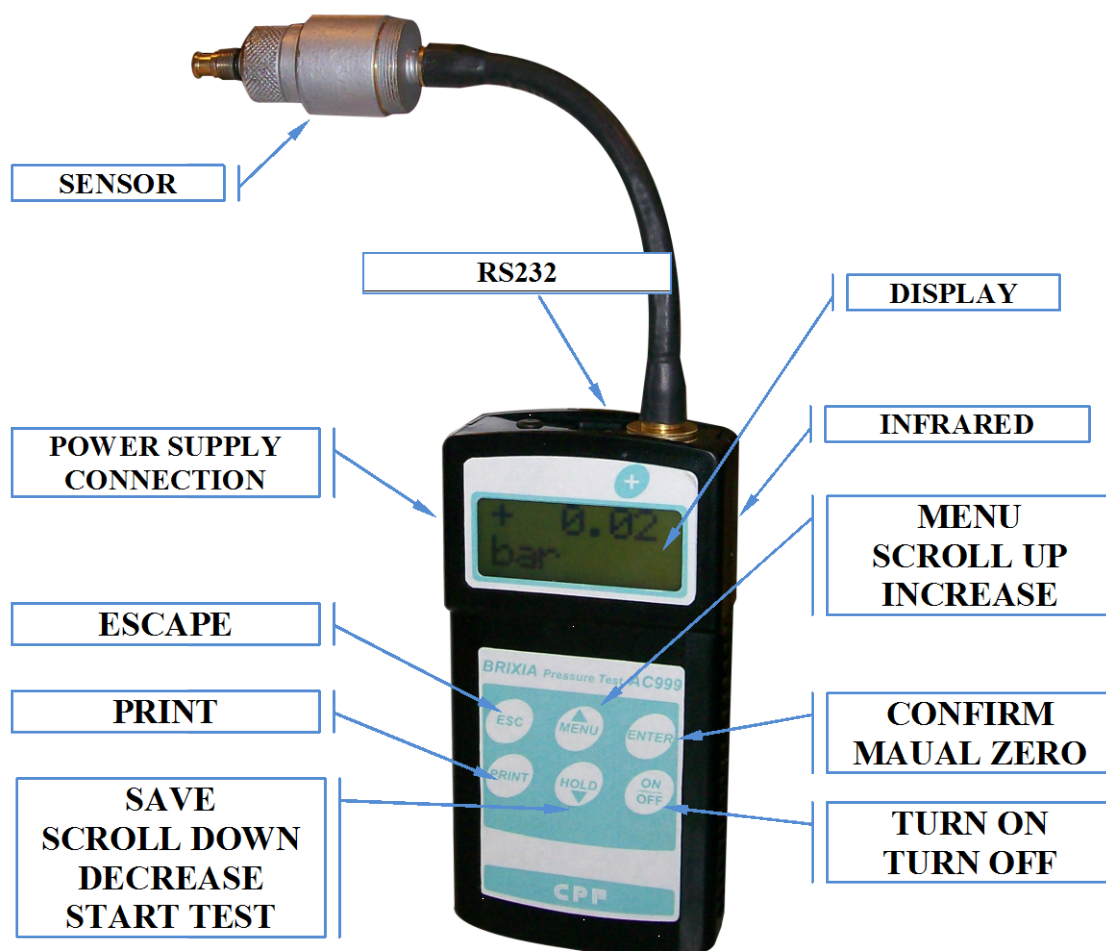
CONTENTS

1.	INTRODUCTION	4
2.	USE OF THE INSTRUMENTS	5
2.1.	<i>RECHARGING THE BATTERY</i>	5
2.2.	<i>MENU</i>	5
2.2.1.	SETTINGS	6
2.2.2.	PRESSURE AND TEMPERATURE	6
2.2.3.	UNIT OF MEASUREMENT	6
2.2.4.	NOMINAL PRESSURE	7
2.2.5.	PRESSURE TEST	7
2.2.6.	READING THE MEMORY	7
2.2.7.	ERASE THE MEMORY	7
2.2.8.	PC DATA	7
3.	SOFTWARE	8
3.1.	<i>INSTALLATION</i>	8
3.2.	<i>USE</i>	9
3.2.1.	Serial port configuration	10
3.2.2.	Exporting saved data from instrument memory	10
3.2.3.	Setting up company data	10
4.	USING THE PRINTER	11
5.	MAINTENANCE	12
6.	TECHNICAL CHARACTERISTICS	12
7.	WARRANTY CERTIFICATE	14
8.	Note	15

1. INTRODUCTION

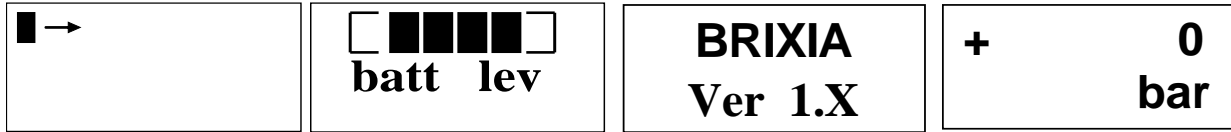
We design and create our products with painstaking care to guarantee their absolute reliability when put to their intended use. Correct use and proper maintenance are essential to keep the AC999 instrument in good, reliable working order.

Do not put the appliance to any use other than the one intended by the manufacturer. Keep it in a place that is neither too hot nor too cold (refer to the "Technical Characteristics") and where there is no likelihood of sudden changes in temperature which can form condensation inside the instrument. You are advised to care for and maintain the instrument as best as possible. **CPF Industriale** can, on request, calibrate the instrument on an occasional basis and issue a calibration report. Please contact us for information on annual maintenance, as **"a small expense today is better than a large expense tomorrow"**.



2. USE OF THE INSTRUMENTS

Turn on the instrument by pressing and holding the “**ON/OFF**” button until the cursor symbol scrolls across the display.



Pressure tests can be executed after the calibration cycle. Press “**ENTER**” to execute “**0**”, press “**HOLD**” to freeze the screen, and press “**PRINT**” to start printing.

2.1. RECHARGING THE BATTERY

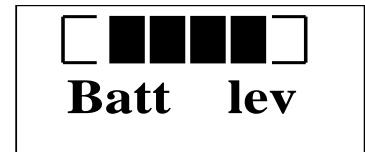
Battery status is shown on start-up. It appears during normal use when the battery is low.

The AC999 turns itself off if the battery level falls below 3 V.

The power supply provided allows you to execute pressure tests even when the battery is low.

To charge the battery, insert the plug of the power supply in the socket on the left-hand side of the AC999.

The display is illuminated when the instrument is charging. The batteries take about 4-5 hours to charge. The appliance uses lithium batteries; you can contact us for replacement ones (refer to page 16 in the Maintenance chapter).



IMPORTANT NOTE

You are advised to charge the battery at least once every two months, even if the instrument has not been used. This prevents the power level from dropping too low, which can cause irreparable damage to the battery.

2.2. MENU

Press “**MENU**” to display

“**1. SETTINGS**”

Use the arrows ▲ ▼ (on the **MENU** and **HOLD** buttons) to scroll through the functions:

**1. SETTI
NGS**

1. SETTINGS
2. PRESS. & TEMP.
3. UNIT OF MEAS.
4. NOMINAL PRESS
5. PRESSURE TEST
- 6 READ MEMORY
- 7.ERASE MEMORY
8. PC DATA

2.2.1. SETTINGS

Press “ENTER” to select the instrument’s settings:

- AUTO OFF
- BEEP
- DATA & TIME
- PRINTER

AUTO OFF press “ENTER” and then ▲ to select **YES**. Press “ENTER” again to confirm. The instrument will turn off automatically after 5 minutes of inactivity.

To disable the function, select NO and press “ENTER” to confirm.

1. SETTING S

→ AUTO OFF

→ NO

BEEP (Buzzer) press “ENTER” and then select “YES” or “NO” with the ▲ or ▼ arrows. Press “ENTER” to confirm. To disable the buzzer, select NO and press “ENTER” to confirm.

→ BEEP

→ NO

DATE AND TIME Press “ENTER” to display the date and time. Use the ▲ ▼ arrows to increase or decrease the value displayed, starting with the first digit in the top left corner. Press “ENTER” to move the cursor to the right, “ESC” to move the cursor back to the start and “ENTER” to confirm.

15 / 10 / 05
16:30

PRINTER : press “ENTER” and then use the ▲ arrow to select the current printer.

PRINTER

2.2.2. PRESSURE AND TEMPERATURE

Press “ENTER” to display the instrument’s pressure and temperature readings.

2. PRESS. & TEMP.

+ 15.7 bar
+ 23.5°C

2.2.3. UNIT OF MEASUREMENT

Press “ENTER” to display > “PRESSURE”

Press “ENTER” again to display the configured unit of measurement. Press ▲ ▼ if you need to select another unit of measurement: **bar, MPas, PSI**

Press “ESC” to return to the previous page. Scroll with the ▼ arrow to “>TEMPERATURE”, and press “ENTER” to display the configured unit of measurement. Press ▲ ▼ to select any other unit of measurement: °C, °F o K

Press “ESC” to return to the previous pages.

3. UNIT OF MEAS.

2.2.4. NOMINAL PRESSURE

Press **"ENTER"** to enter the menu for configuring the nominal pressure (the pressure at which the extinguisher is filled).
To edit the nominal pressure, press **▲** or **▼** and then **"ENTER"** to confirm.

4.. NOMIN
AL PRESS

P NOM:
1 4 . 0 bar

2.2.5. PRESSURE TEST

Press **"ENTER"** to display **"SER. NO.:00000000"**

Insert the extinguisher's serial number, pressing **▲▼** to change each digit, and then press **"ENTER"** to confirm and move on to the next digit.

The pressure appears on the display when you have inserted the full serial number.

Connect the instrument to the extinguisher valve and press **"HOLD"**.

"OK" appears if the test is successful, or **"LOW"** if it is not.

Press **"PRINT"** to print the test result on a receipt

Press **"ESC"** and you are asked whether to save the data:

press **"ENTER"** to save the data on the memory, or **"ESC"** to return to the previous page.

5. PRESSU
RE TEST

Ext. SN:
00000000

+ 1 5 . 0
Bar M

+ 1 5 . 0
Bar OK

SAVE
DATA ?

2.2.6. READING THE MEMORY

It is possible to display previous tests. Any saved data is displayed at point 6 of the **"Menu"**, where it is shown in chronological order. You can scroll through the data with the **▲▼** arrows. Press **"ENTER"** again to display the date, SN and test result.

Press **"ESC"** to return to the menu.

6.READ
MEMORY

n . 3
28 / 02 / 10

+ 1 4 . 0
bar OK

2.2.7. ERASE THE MEMORY

This function allows you to erase the entire memory (tests and data). Press **"ENTER"** and you are asked to confirm whether to proceed. Press **"ENTER"** again to erase the memory definitively.

7.E R A S E
MEMORY

2.2.8. PC DATA

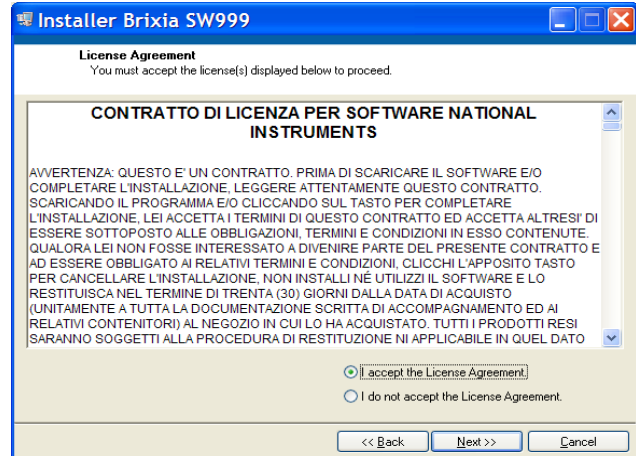
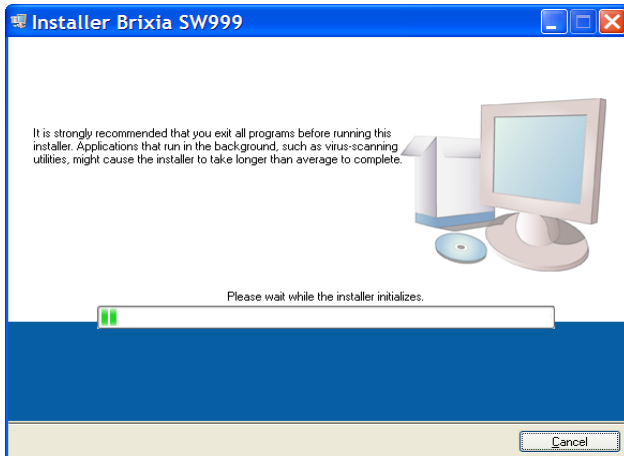
PC connection menu

CONNECTI
NG...

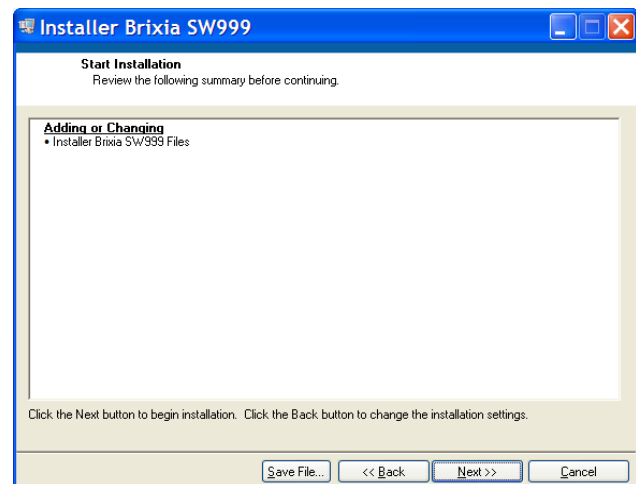
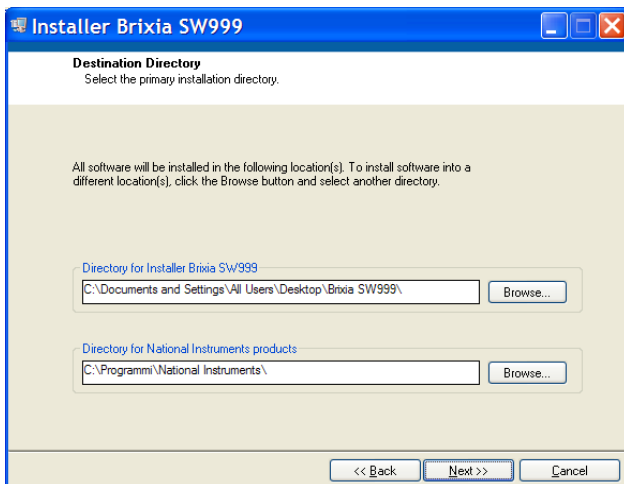
3. SOFTWARE

3.1. INSTALLATION

By inserting the software CD SW999, whether on your own pc is enabled autoplay CD-ROM software installation will start automatically. Otherwise, run the "setup.exe" file in the root directory of the CD-ROM

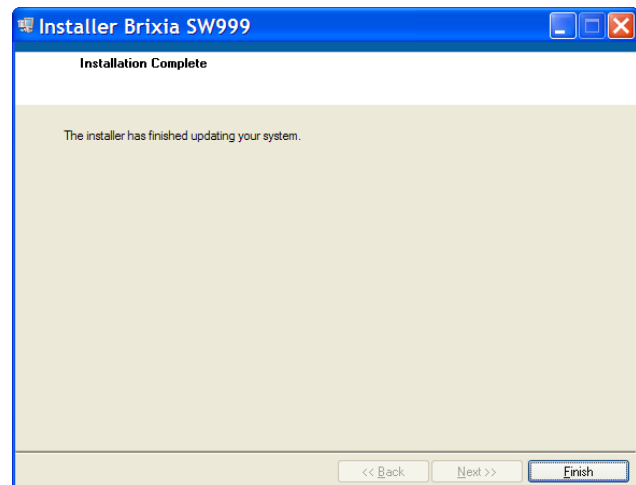
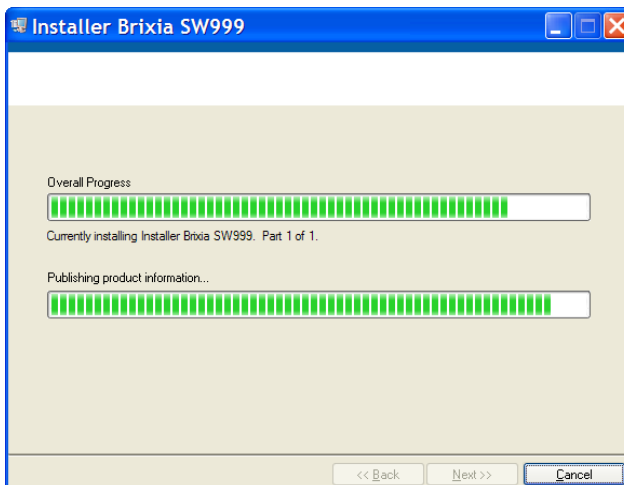


Select "I accept the license agreement" and click "Next"



Select the installation directory (if you want to change it) and click "Next"

On the next screen click "Next"

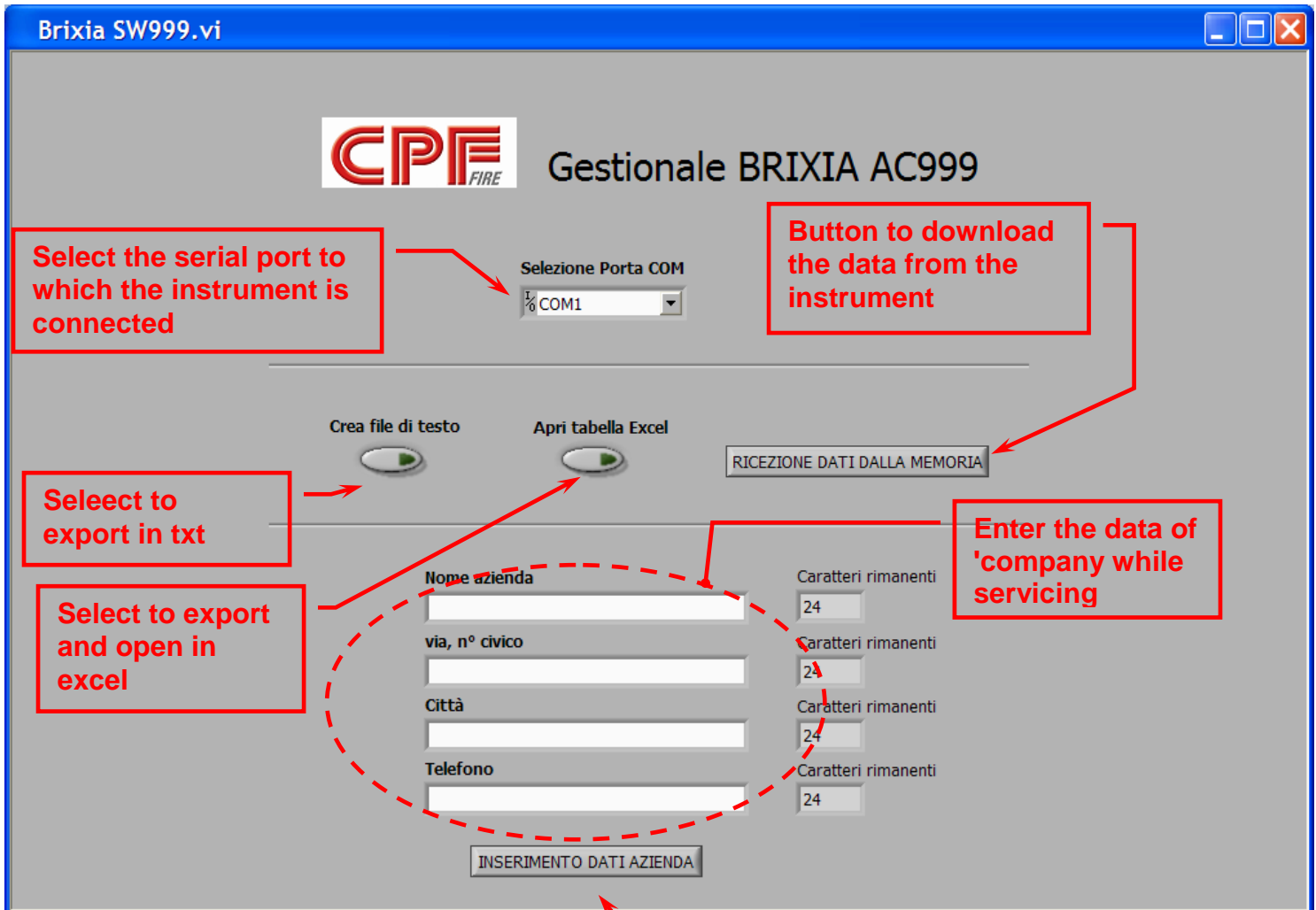


At the end of 'installation click "Finish", you will be prompted to restart your computer.

3.2. USE

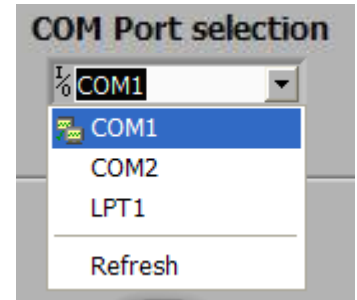
N.B. On the first insertion of USB cable into the PC, will automatically install the drivers for the device operation. Make sure that the driver installation is complete before starting the software SW999.

On startup the software displays the following screen:



3.2.1. Serial port configuration

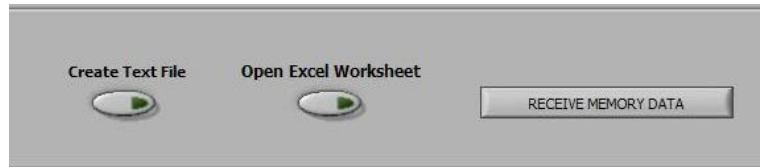
Select the serial port (COM port) on your computer that is connected to the instrument by the 'special drop-down menu (formito the USB cable supplied is a virtual COM port).



From the menu of the instrument "8. PC DATA "enable data connection, so that the instrument is in state" CONNECTING ... "

3.2.2. Exporting saved data from instrument memory

Select whether to export to a text file or an excel file (you can select both)



Then clicking on the "RECEIVING DATA FROM MEMORY" the data on the device is exported to the previously selected file

NOTE: The instrument must be in the "CONNECTION"

Example of the exported file in excel:

	A	B	C	D	E	F	G	H	I	J	K
	Company	Extinguisher S/n	Nominal Pr. (bar)	Obtained Pr. (bar)	Temperature (°C)						
1											
2		1	20000000	15	15.3	22.9					
3		1	10000000	15	14.7	23.1					
4		1	40000000	15	12.3	23.2					
5		1	70000000	15	15.5	24					
6											
7											
8											
9											
10											
11											
12											
13											
14											
15											
16											
17											
18											
19											
20											
21											

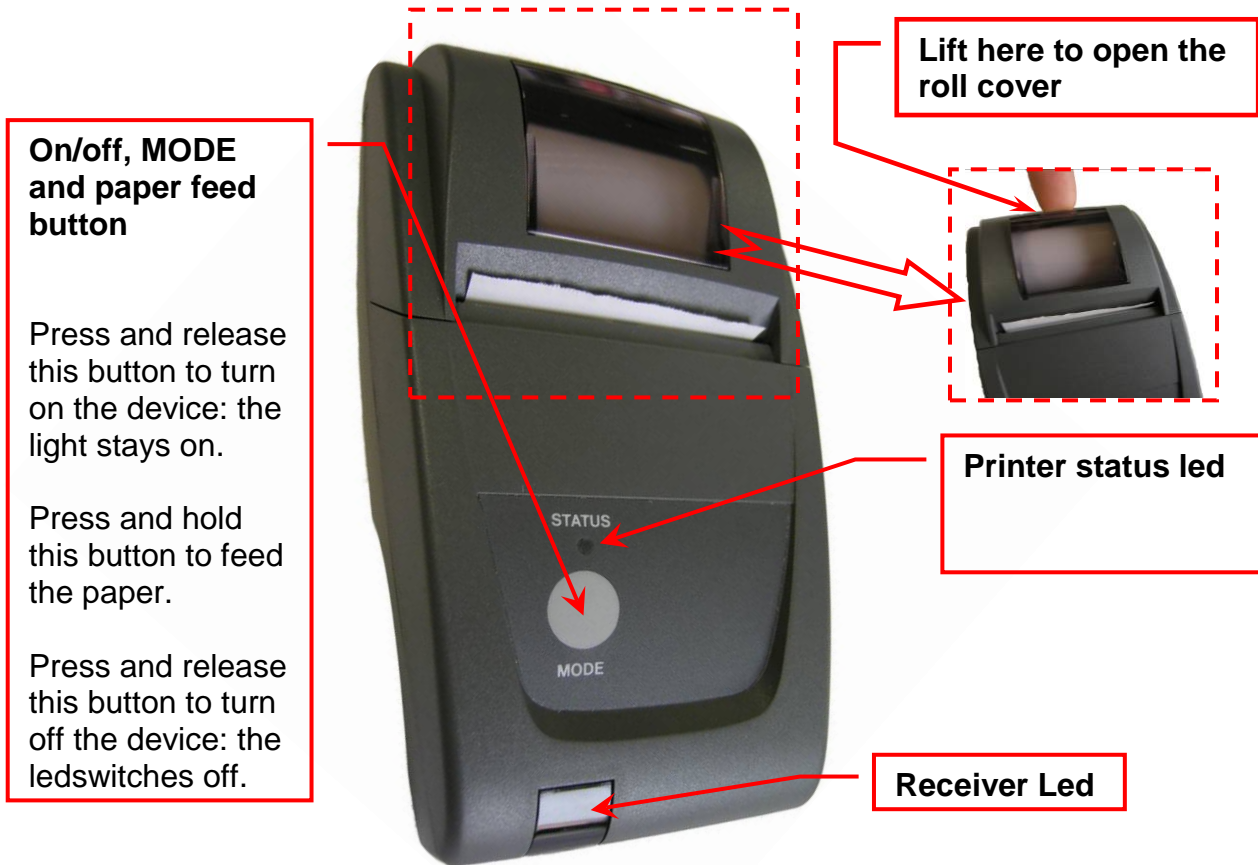
3.2.3. Setting up company data

Type in the fields with white background data to be loaded.

Then clicking on the "DATA ENTRY COMPANY" 's header is loaded on the instrument, at this point the AC999 automatically the received data in order to assess their correctness pa.

NOTE: The instrument must be in the "CONNECTION"

4. USING THE PRINTER



How to replace the paper:

1. Open the cover by lifting the transparent window.
2. Remove the old roll and, if necessary, feed out any paper still remaining in the printer.
3. Put in the new roll of paper, inserting the paper through the slot and pressing the button to feed it

Environmental condition:

Temperature	0 – 50°C
Humidity	10% - 85% Rh

How to replace the batteries

- Remove the cover on the battery compartment at the back of the printer.
- Remove the 4 batteries and insert the new ones, making sure to put them in the right way round.



Note: To print, point the infrared LED on the AC999 towards the receiver on the printer

5. MAINTENANCE

You are advised to send us your instrument for maintenance (at CPF or an authorized service centre) once a year.

Normal maintenance consists of checking the calibration and cleaning the pipes.

FOR CORRECT MAINTENANCE:

Always use original sensors or spare parts and do not have the instrument maintained at unauthorized centres, otherwise the warranty shall be forfeited.

REPLACING THE BATTERY

The replaceable battery (BA045) is easy to replace. Turn off the instrument and disconnect it from the battery charger then open the cover at the back of the **case**, remove the battery and take off the connector.

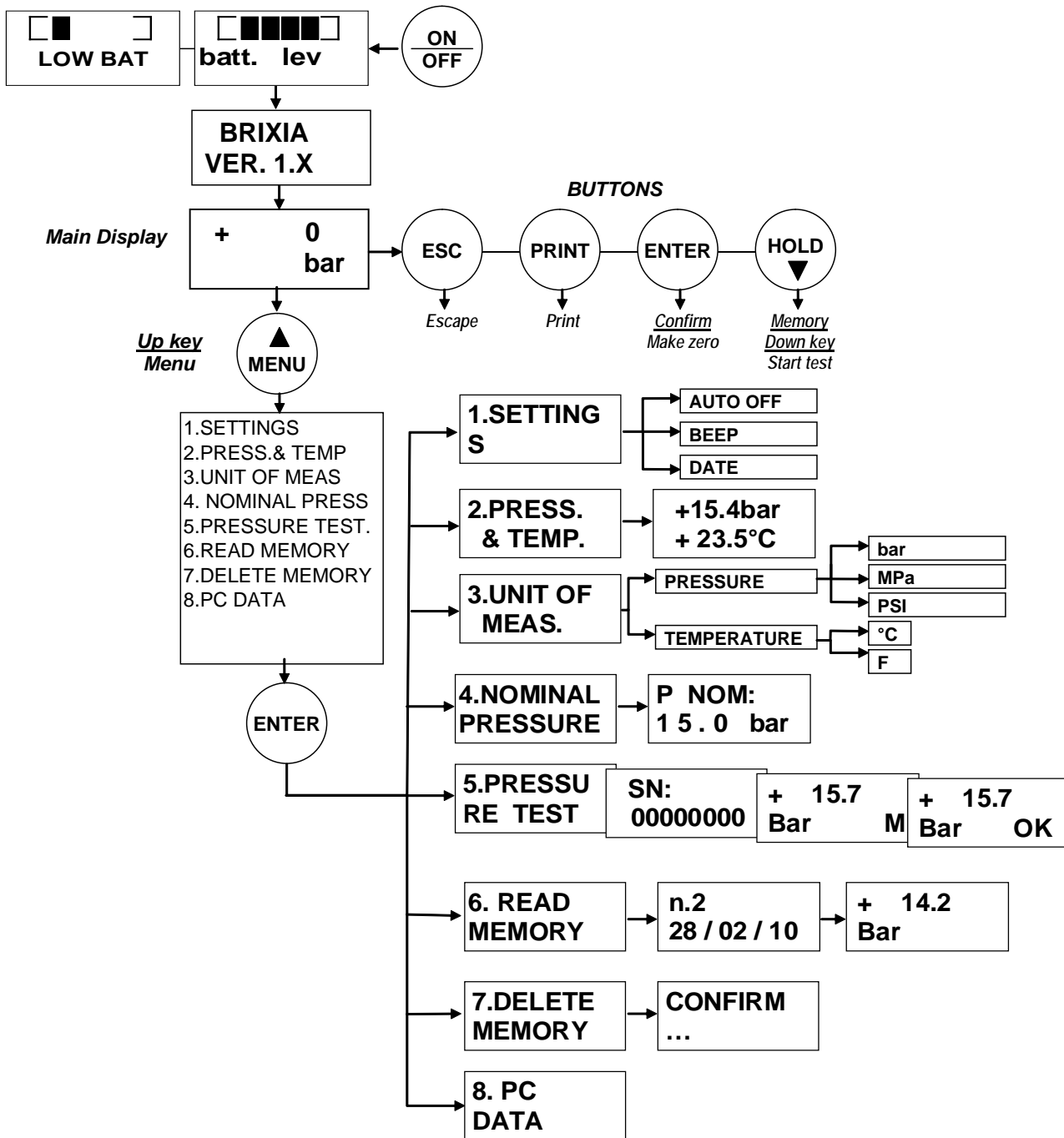
Next, attach the polarized connector on the new battery, put the battery in the compartment and re-close the cover.

6. TECHNICAL CHARACTERISTICS

Pressure range	0... +35bar
Resolution	0.1 bar
Accuracy	±1% fs
Display	LCD 8 characters on 2 lines
Battery	Li-ion 3.6Vdc 1.1 Ah
Average battery duration	30 hours
Battery charging time	4 hours
Pneumatic connection	M1 0x1
Weight of the case	Approx. 1.4 Kg
Dimensions of the instrument	260mm x 80mm x 35mm (excl. the sensor l =21 0mm)
Printer	External infrared printer; paper width 58mm
Power	230Vca external power supply for charging or direct power (also for the printer).
Operating temperature	-5 +60°C
Storage temperature	-20 +85°C
Max applicable pressure	65 bar

AC999 conforms to the provisions of standard EN 3-7/2005

AC999 in breve



7. WARRANTY CERTIFICATE

CONDITIONS OF GUARANTEE

DURATION

CPF Industriale S.p.a, in the presence of defects for which it is established the liability of the manufacturer, guarantees the product for a period of 24 months from date of purchase by the end Customer (hereof named the Customer), which is proven by a valid receipt issued by the authorized dealer. Note: the Sensors (i.e.: measuring sensors), the pump and the batteries are covered by a **12 months** period guarantee.

VALIDITY

The guarantee includes free repair or replacement of component parts of the instrument to be defective at their origin for manufacturing defects, excluding the cases mentioned in paragraph "Limitations of Liability."

Guarantee claims will be proven by the original certificate and by a valid document issued by the dealer at time of purchase, where the product model, the product serial number, the purchase date and the name of the reseller are stated

This present guarantee is void if the type or serial number of the product is modified, deleted, removed or defaced, and if repairs or modifications are carried out by unauthorized personnel or spare parts not original are used.

Note: The present guarantee does not cover regular maintenance operation or replacement of parts due to normal wear.

This commercial guarantee offered by CPF Industriale S.p.a shall not affect the consumer's rights under the Decree. Nr.24 of February 2nd, 2002, issued in implementation of the European Directive 99/44/CE, as well as the Decree. n. 206.of September 6th, 2005

LIABILITY

During the warranty period, Tecnocontrol Ltd is committed to correct the defects caused by manufacturing defects, without any cost for the Customer. In the event that the defective instrument is missing one or more parts it will be repaired and returned without integrating the same parts, unless specifically requested to do so. If not possible to restore the instrument through the repair and/or if the same proves to be too costly in comparison to the value of the product, (evaluated at the discretion of CPF Industriale S.p.a) the instrument will be replaced to the end customer with written notice, leaving unchanged the maturities and the guarantee terms of the original contract evidenced by the official receipt issued by the dealer at the time of purchase. In case of replacement of the instrument, and in case a similar instrument is not available, Tecnocontrol reserves the right to change the instrument with another of similar type, but different model, having however the same functions and the same purpose.

LIMITATION OF LIABILITY

The defectiveness is not attributable to CPF Industriale S.p.a if it is found that causes have occurred outside the operation conditions of the product. The guarantee does not cover damage due to improper or faulty installation/use, or installation/use not in accordance with the instructions, or in their absence and/or not made as per the state of the-art; for incorrect or inadequate maintenance specified in the instruction manuals; or according to the common maintenance operations; for improper or wrong use, for neglected or improper use. In any case for any reasons not attributable to the manufacturer.

The guarantee excludes consumables (printer paper, filters,).

Tecnocontrol Ltd disclaims all liability for any damage that may directly or indirectly be caused by their products to people, animals or property as a result of failure to comply with all instructions given in the instruction manual, concerning use, operation and maintenance of the instrument

Model: _____

Serial number/series _____

THIS CERTIFICATE OF GUARANTEE SHOULD NOT BE SENT, BUT ATTACHED TO THE PURCHASING RECEIPT

The warranty is valid only if accompanied by an official purchasing proof. We advise you to staple your purchasing proof received by the dealer and to keep it with this guarantee certificate.

*STAMP AND SIGNATURE
DEALER/RESELLER*

PRODUCED IN ITALY BY

CPF

I N D U S T R I A L E

Via Enrico Fermi,98
25064 Gussago (Brescia) - Italy

Tel: +39 030 31 04 61

Fax: +39 030 31 04 65

http: www.cpfindustriale.it

e-mail: info@cpfindustriale.it



INFORMATION FOR USERS

In accordance with article 13 of Legislative Decree no. 151 of 25 July 2005 "Implementation of Directives 2002/95/EC, 2002/96/EC and 2003/108/EC on the reduction of use of dangerous substances in electrical and electronic equipment, and on the disposal of waste."

The crossed out wheeled bin symbol on the appliance or pack indicates the product should be disposed of separately from other waste at the end of its useful life. Segregated collection of this appliance at the end of its life is organized and arranged by the producer. The user who wishes to dispose of this appliance should therefore contact the producer and implement the instructions imparted regarding segregated disposal of the appliance at the end of its life. Appropriate segregated collection of the appliance for purposes of recycling, treatment and environmentally friendly disposal helps prevent any negative impact on health and the environment, and encourages re-use and/or recycling of the materials that make up the appliance.

Users who fail to dispose of the product properly shall be fined in accordance with the law in force